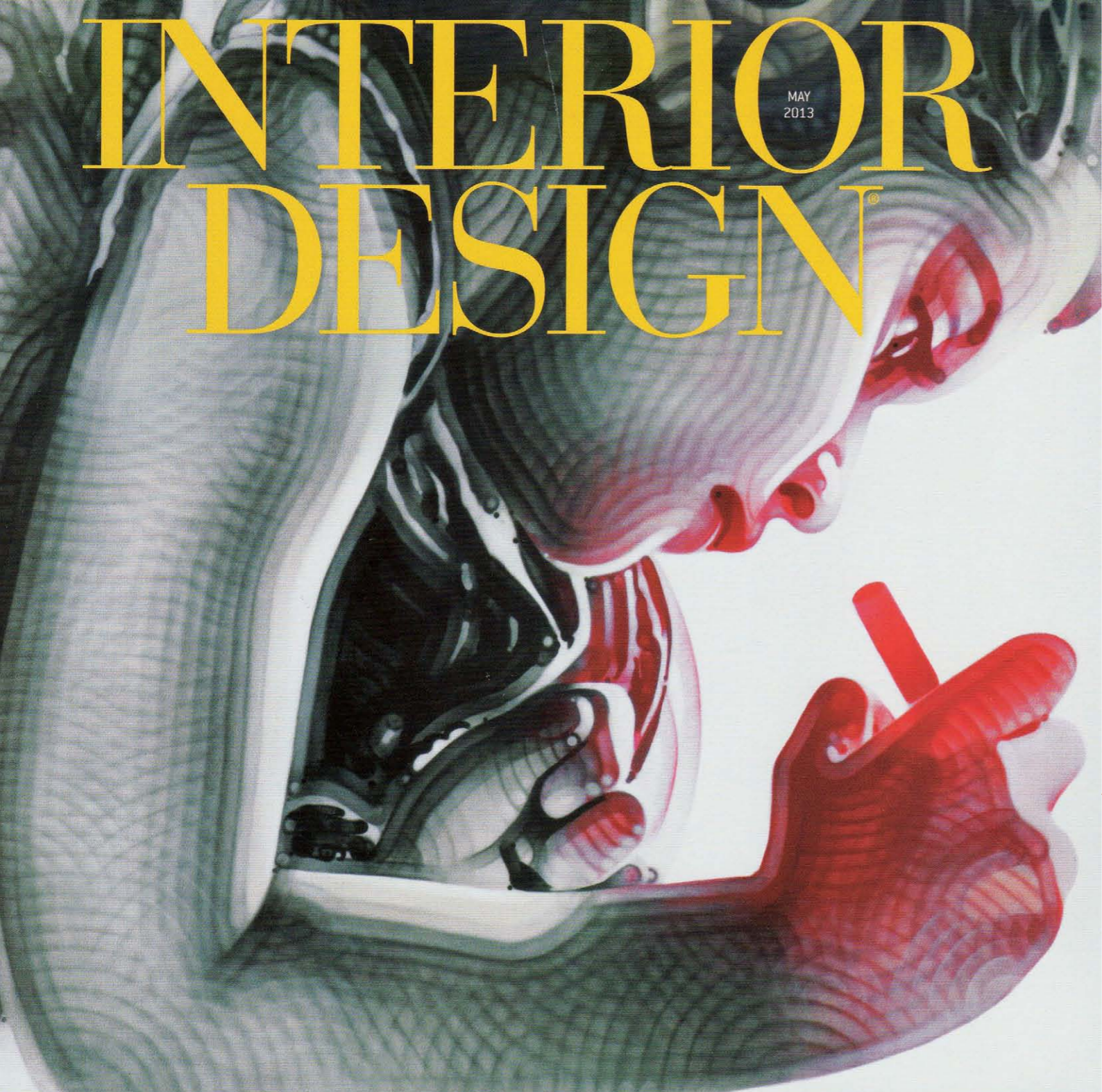
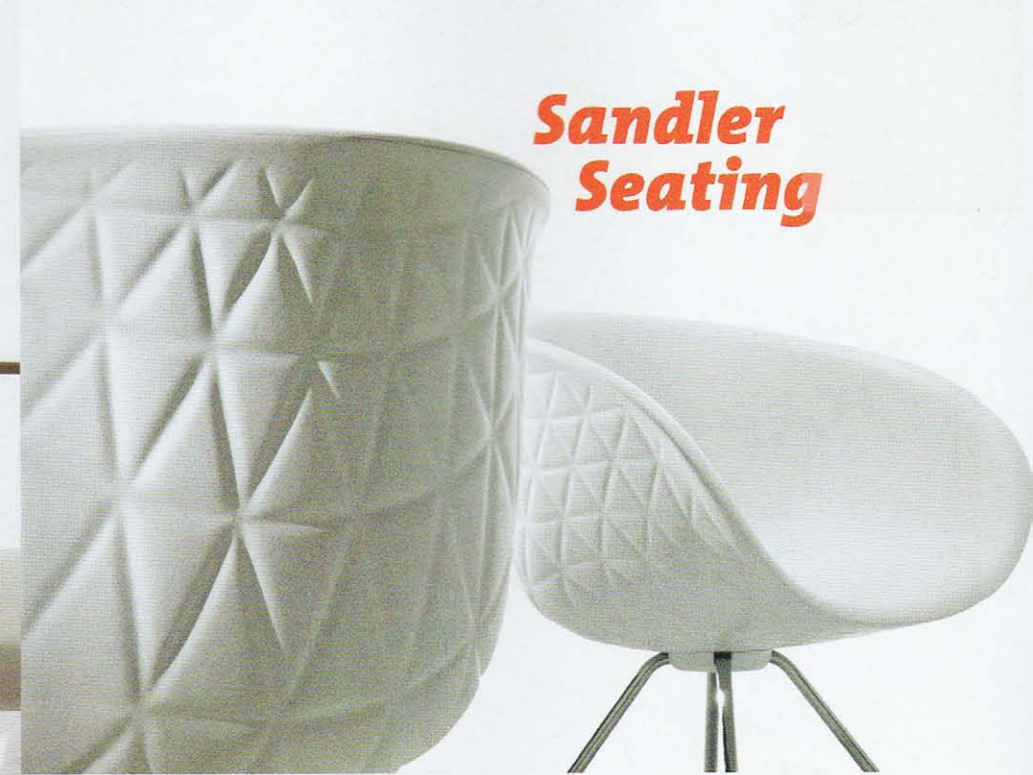
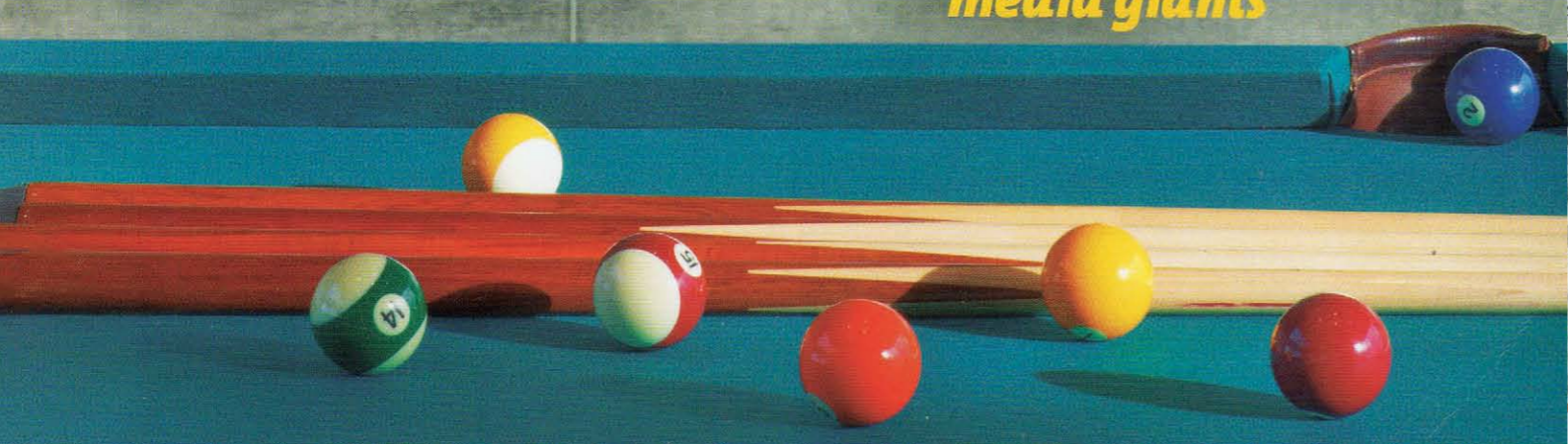


INTERIOR DESIGN

MAY
2013



media giants

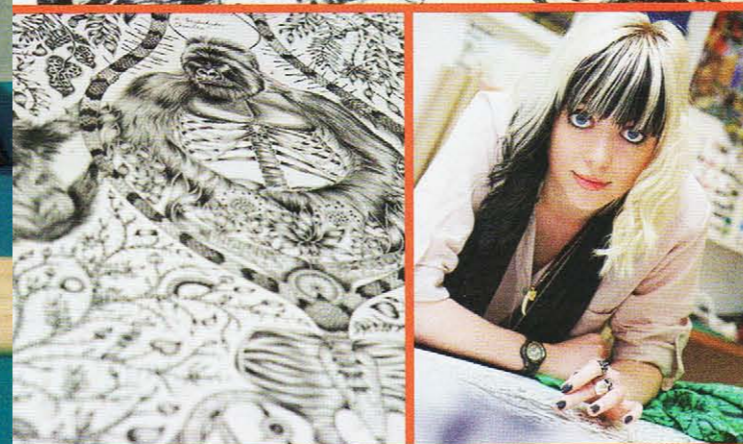


Sandler Seating



If you fancy the puffy life, Massive Design principal Mac Stopa has the seat for you. His **Structure** chair is composed of an internal steel frame, over which low-density polyurethane foam is molded, resulting in a highly textured surface that resembles 3-D printing. There's also a wealth of options: 11 colors for the shell; oak, black walnut, or polished chrome for the legs. 404-982-9000; sandlerseating.com. **circle 415**

neocon
market



Camira

Fashion designer Emma J. Shipley is directing her Goth-exotic sensibilities toward upholstery textiles. **Titus**, a detailed reproduction of her silverback gorilla drawing, coordinates seamlessly with **Tangled**, a jungle-theme graphic that includes stylistic elements borrowed from Titus. Both patterns belong to Blazer, the manufacturer's hugely popular line of wool fabrics that are renewable and compostable. All are offered at 54 inches wide, with a billiard-cloth felted finish. 317-484-0305; camirafabrics.com. **circle 416**